



# Modulation of P300 by Cognitive Enhancement Therapy in Early Course Schizophrenia

Kelly N Farrell, Synthia Guimond, Yunxiang Tang, Luis R Sandoval, Rosa Johnston, Jerred Endsley, Olivia Lutz, Shezal Padani, Shaun Eack, Matcheri S Keshavan



## Background

- Cognitive enhancement therapies (CET) aim to treat cognitive symptoms of schizophrenia (SZ) [1,2]. However, little is known about the brain mechanisms underlying associated cognitive changes seen in clinical trials.
- The current study seeks to determine if CET significant effects cognitive markers such as the P300 [3,4] and neuropsychological testing scores, as targets for potential mechanisms for cognitive changes seen in clinical trials.

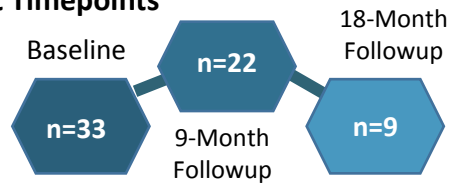
## Methods

### Single Blind Study of early cure SZ Patients

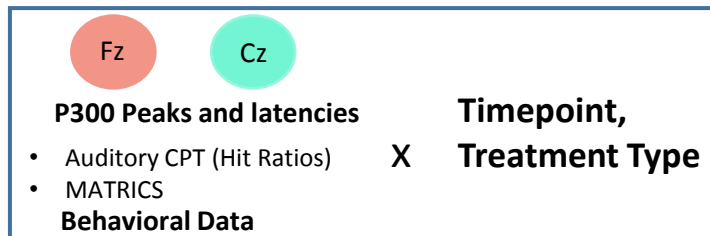
CET (n=18)

EST (n=15)

### Assessment Timepoints

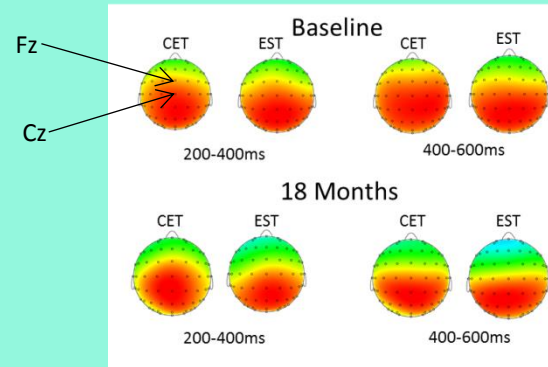


### Mixed Model Analysis



## Results

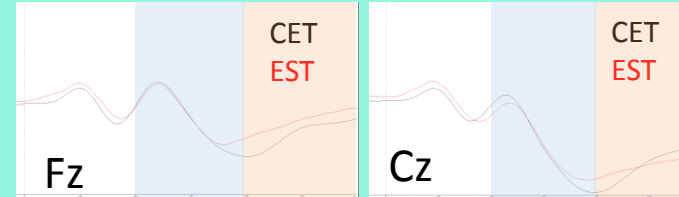
ERP Results: No significant group differences in P300 latency were found at Cz, or in P300 voltages at Fz or Cz.



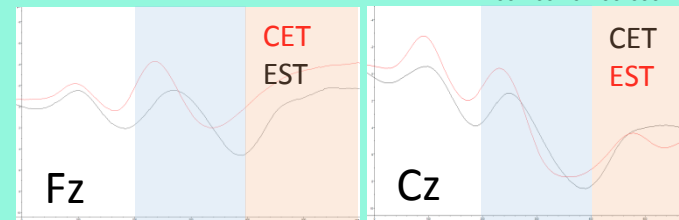
### Pairwise Comparisons—Fz Latency (CET Treatment Group)

	Difference	Std. Error	df	sig
Baseline -> 9M	5.237	31.410	31.514	0.869
Baseline -> 18M	111.250	45.295	38.070	.019*
9M -> 18M	106.014	44.930	29.123	.025*

### Baseline



### 18 Months



## Results, Continued

Neuropsychological Testing Results: No significant group differences were found in the Q3A-Memory and Q3A-Interference paradigms of the Auditory CPT, or MATRICS CPT, OCS, or SOP subscores.

Aud. CPT—QA Hit-to-Miss Ratio	Estimate	Std. Error	df	t-value	sig
Intercept	0.956822	0.016121	33.94	59.353	<2e <sup>-16</sup> *
Timepoint	0.002164	0.001647	9.17	1.314	0.2206
Treatment	0.016311	0.024201	34.29	0.674	0.5048
Timepoint* Treatment	-0.006271	0.002502	12.83	-2.507	<b>0.0264*</b>

(Baseline -> 18 Months)

## Discussion

- While there may be some effect of CET on P300 latency in SZ, the relationship is unclear. The analyses performed are preliminary, with more participants completing follow-up assessments in the coming weeks.
- Participants in the CET group showed smaller P300 latencies between baseline and 18 months, showing some promise for CET's efficacy as measured by attentive-dependent ERPs.
- Those in the CET group had a higher hit-to-miss ratio on the QA paradigm of an auditory continuous performance task, which indicates that auditory attentive skills may be better-maintained in CET.

## Works Cited

Please see handout for complete bibliography.