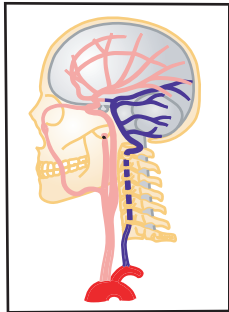
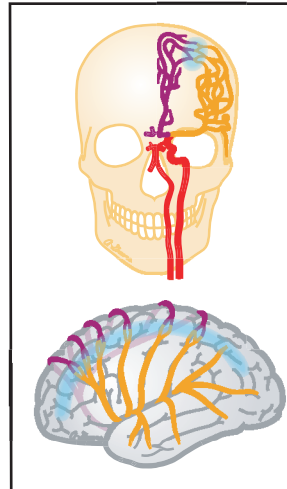


StrokeSTOP Reference Drawings

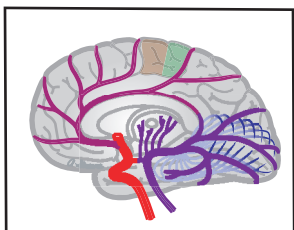
(by Anne B. Greene, MA, CMI)



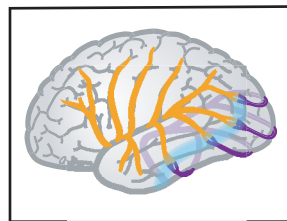
**1. CAROTID-
VERTEBRAL**
Vessel origins and
distributions



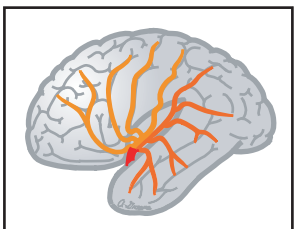
**7. ACA-MCA
ANTERIOR &
LATERAL**
Border zones



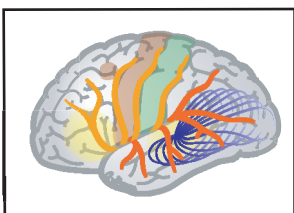
2. MEDIAL BRAIN
ACA
PCA
Functional areas



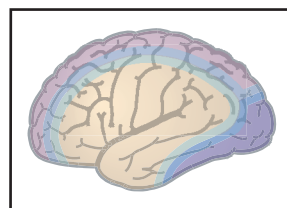
**8. MCA-PCA
LATERAL**
Border zones



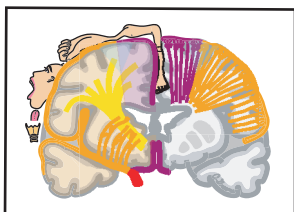
**3. LATERAL BRAIN
OPENED**
MCA - superior
and inferior
branches



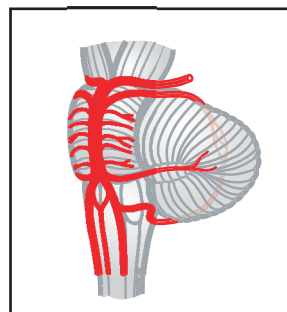
4. LATERAL BRAIN
MCA
Functional areas



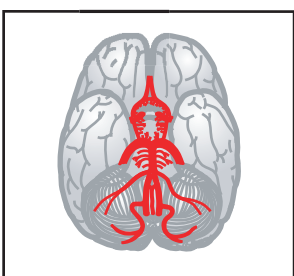
**9. FOREBRAIN
TERRITORY MAPS**
Lateral
Medial
Horizontal
Superior
Inferior



5. CORONAL BRAIN
ACA
MCA

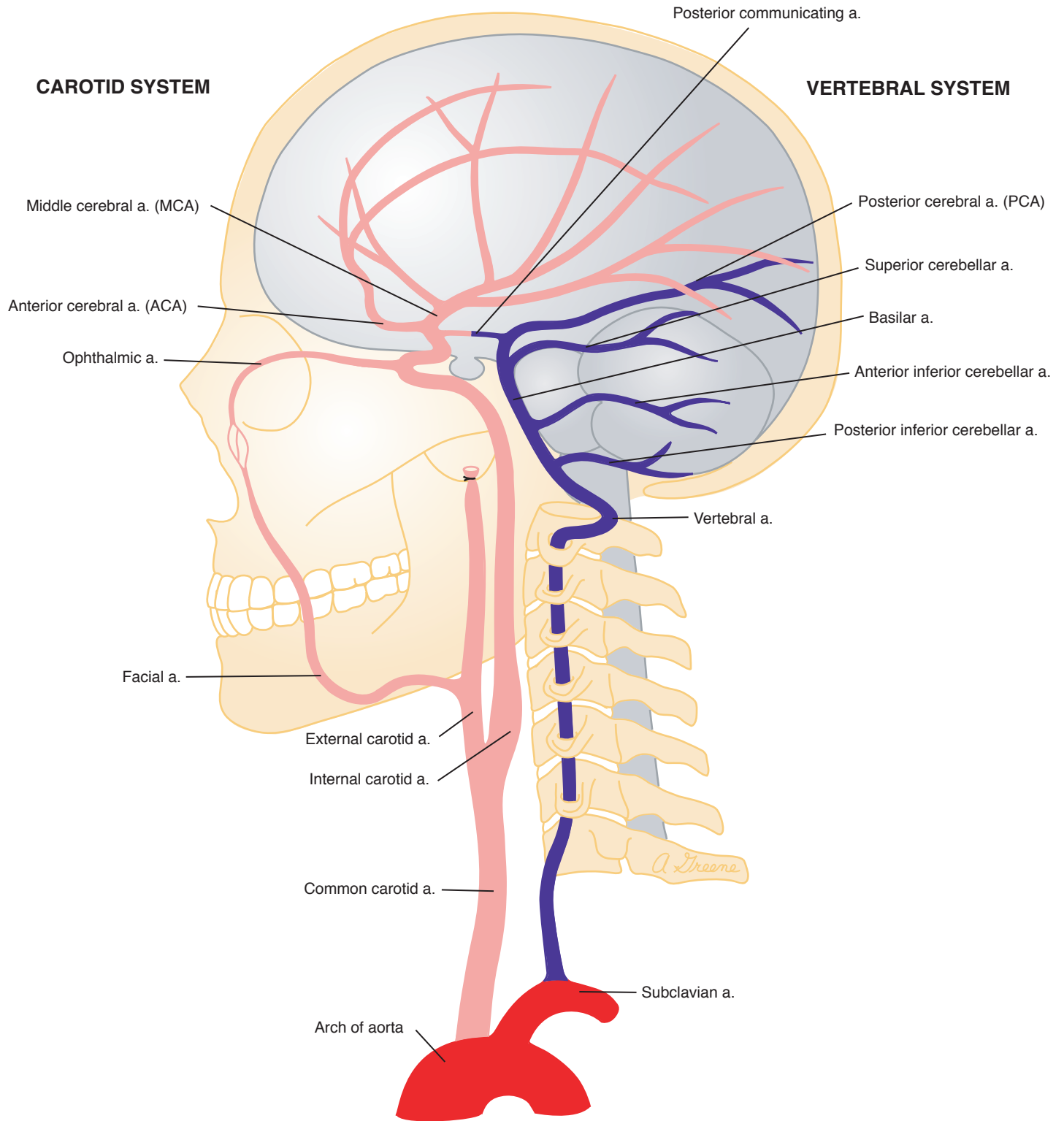


**10. BRAINSTEM
SYNDROMES**
Midbrain
Mid-pons
Caudal pons
Rostral medulla

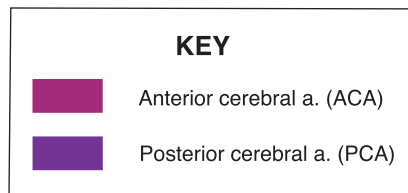
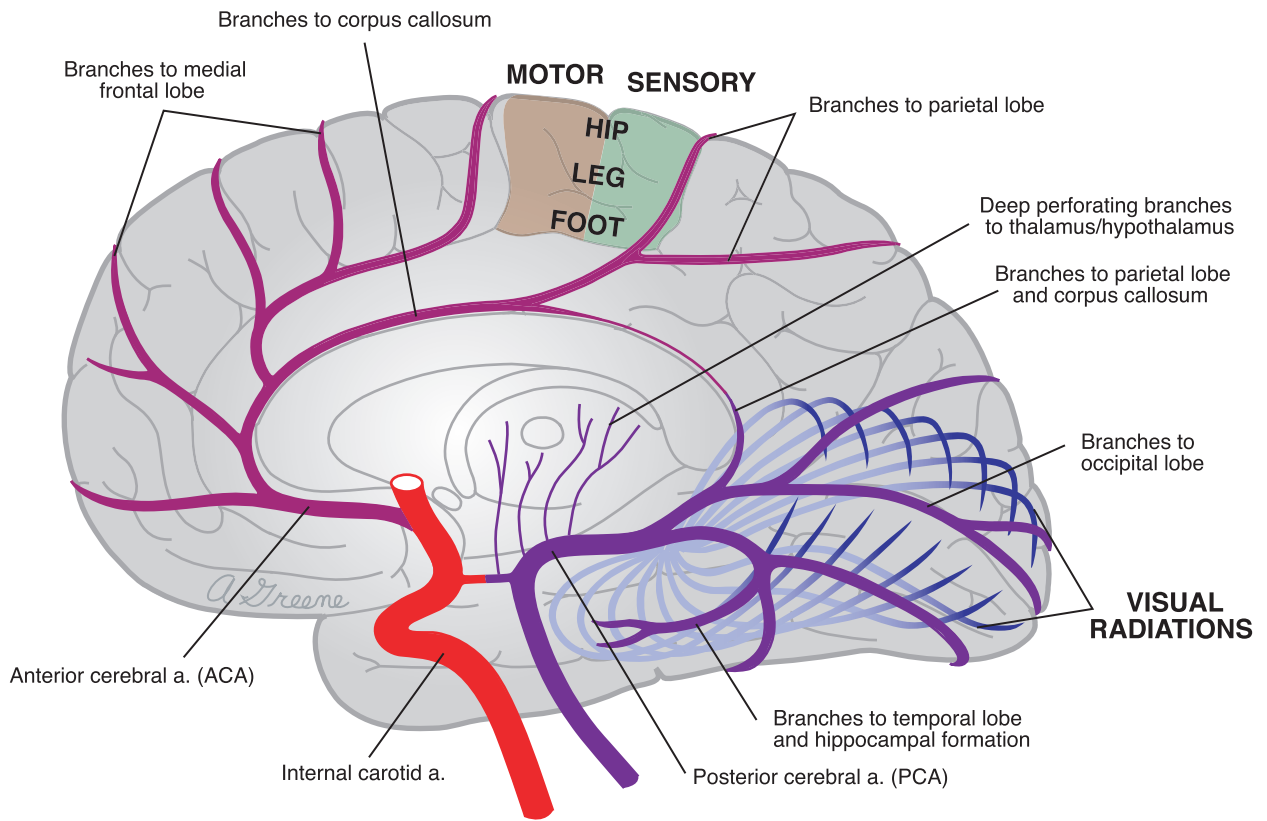


6. BASE OF BRAIN
Carotid system
Vertebral-basilar
system

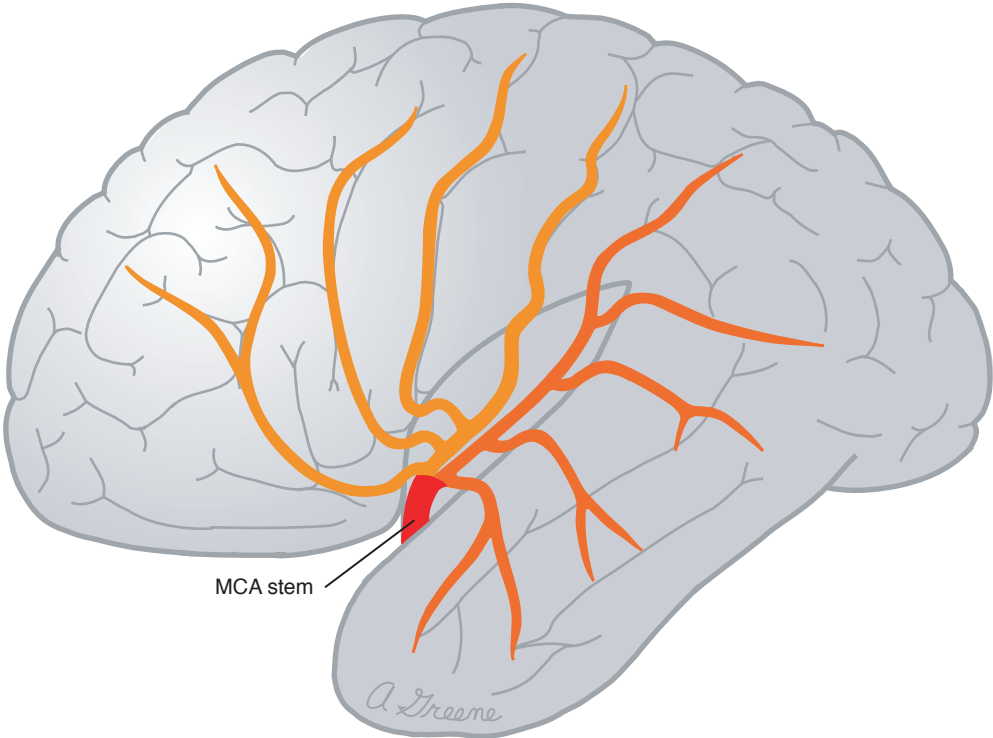
1. CAROTID-VERTEBRAL





2. MEDIAL BRAIN

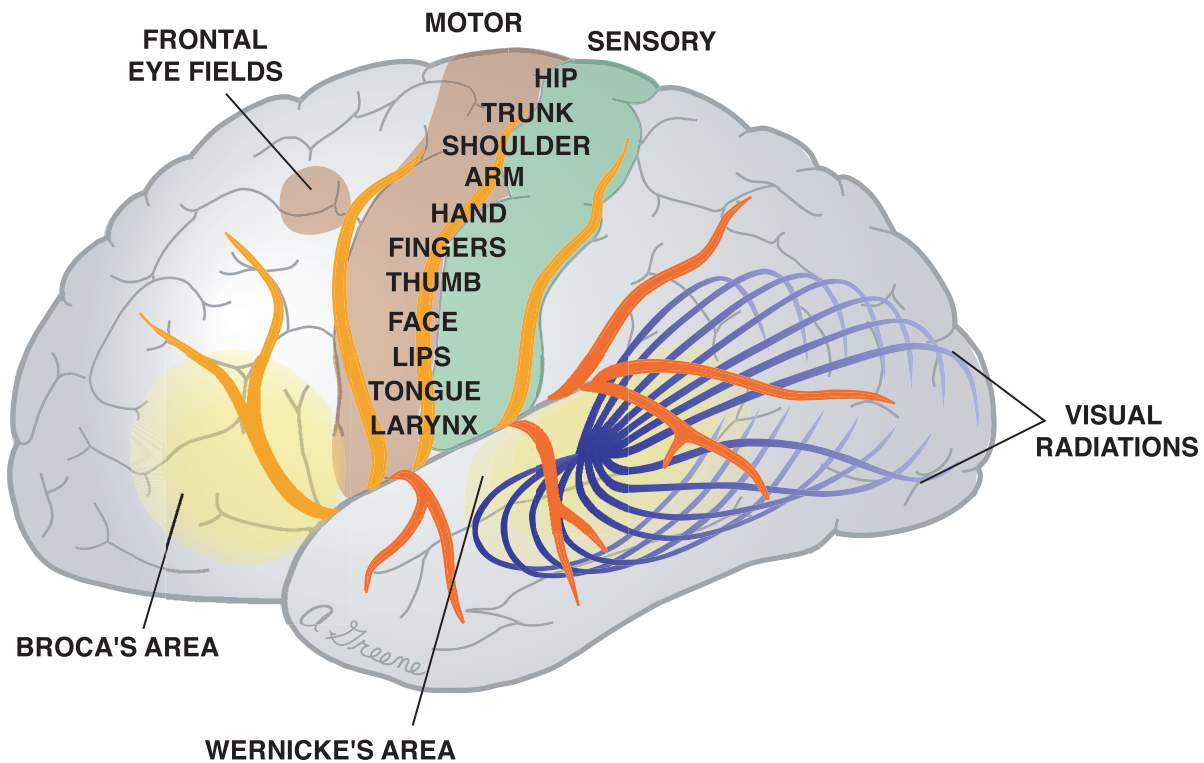




3. LATERAL BRAIN OPENED



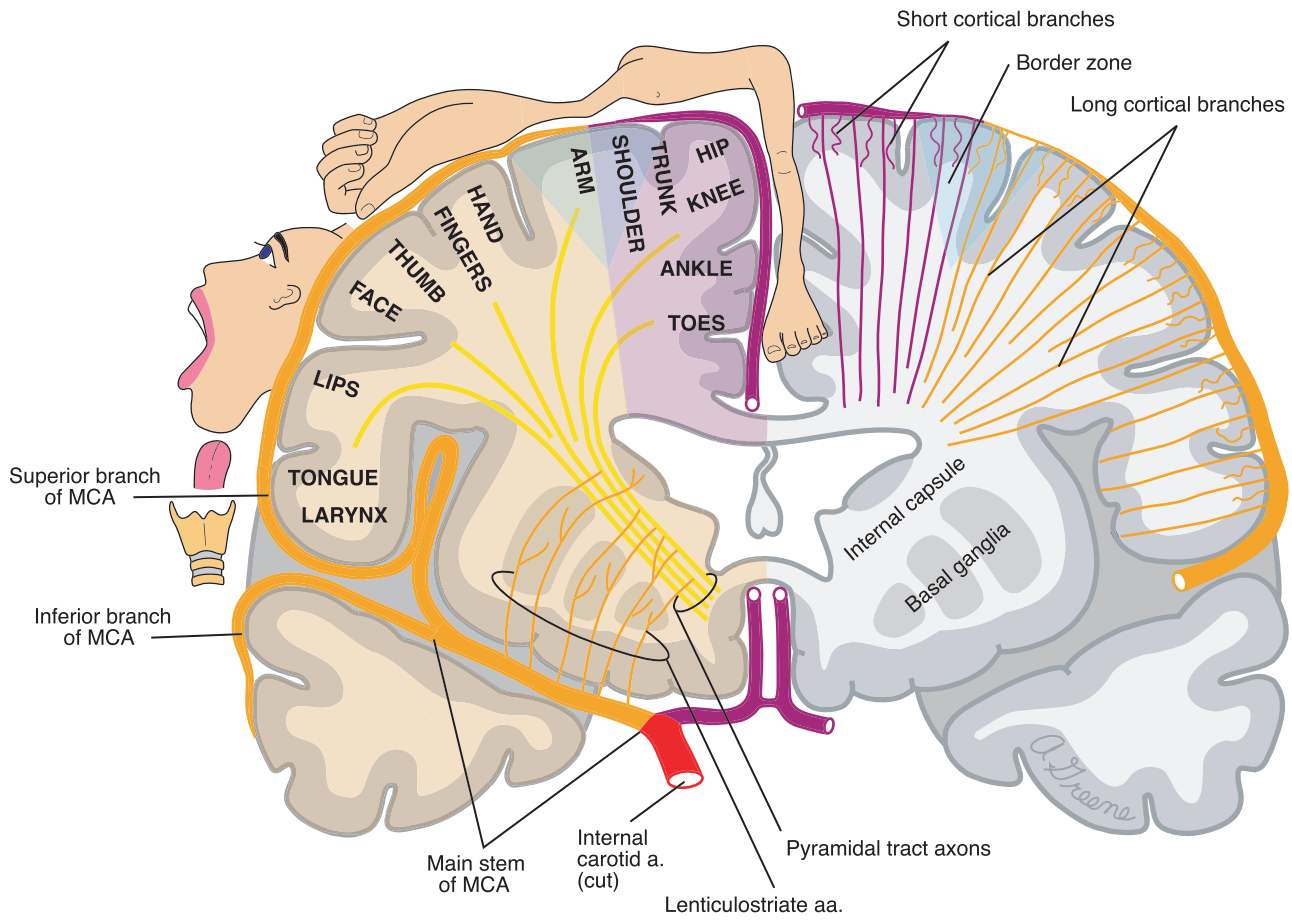
| KEY | |
|---|---|
|  | Superior branches of middle cerebral a. (MCA) |
|  | Inferior branches of middle cerebral a. (MCA) |




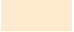

4. LATERAL BRAIN



| KEY | |
|---|---|
|  | Superior branches of middle cerebral a. (MCA) |
|  | Inferior branches of middle cerebral a. (MCA) |

5. CORONAL BRAIN

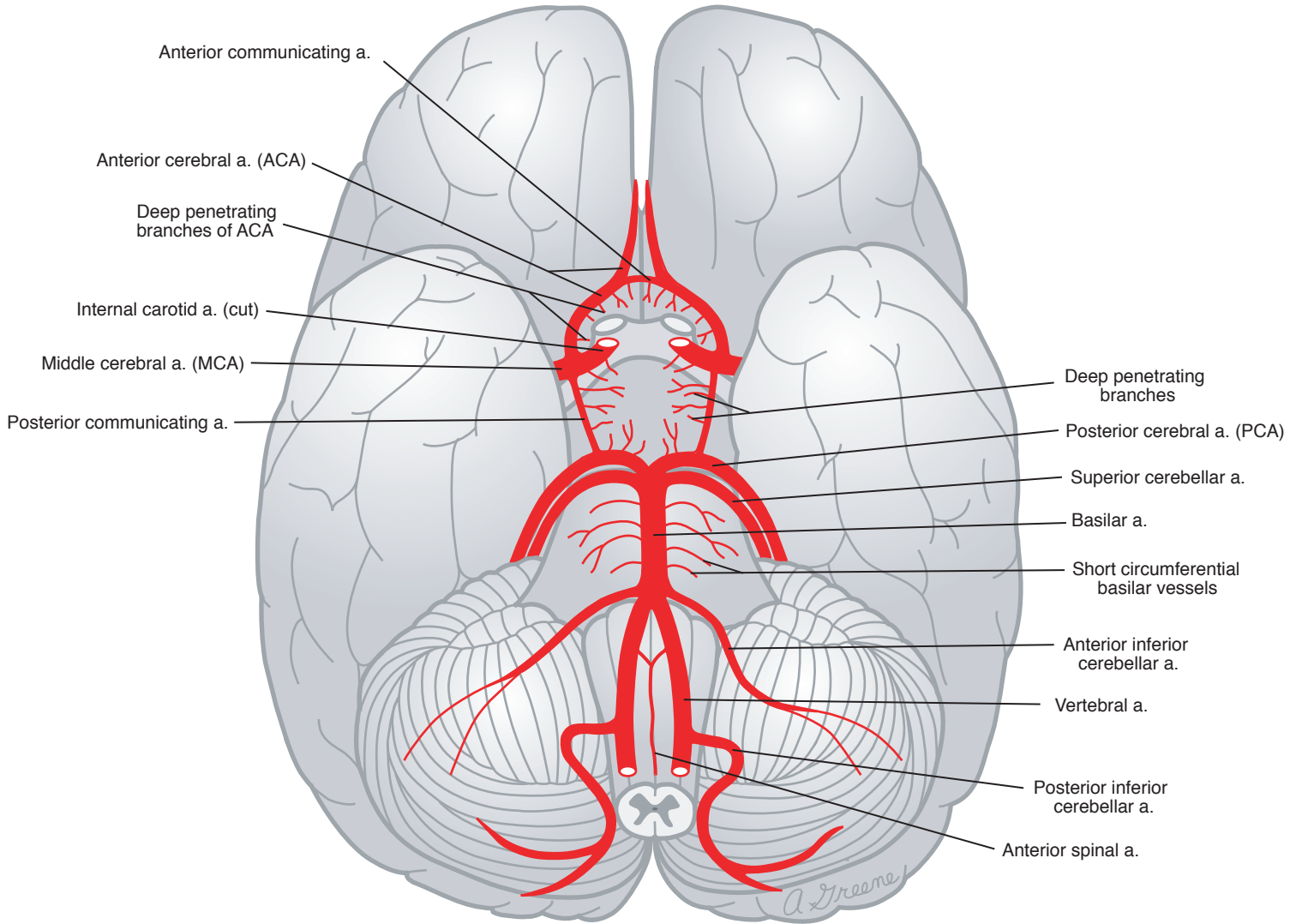


| KEY | |
|---|----------------------------|
|  | Anterior cerebral a. (ACA) |
|  | Middle cerebral a. (MCA) |
|  | ACA territory |
|  | MCA territory |
|  | Border zone |

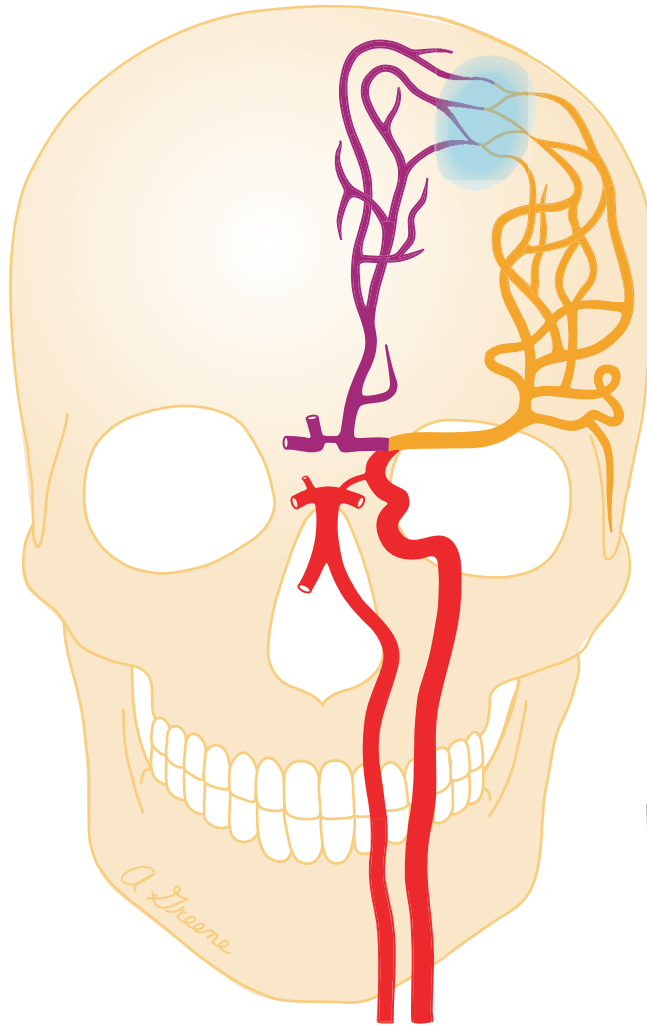
6. BASE OF BRAIN

CAROTID SYSTEM




VERTEBRAL-BASILAR SYSTEM

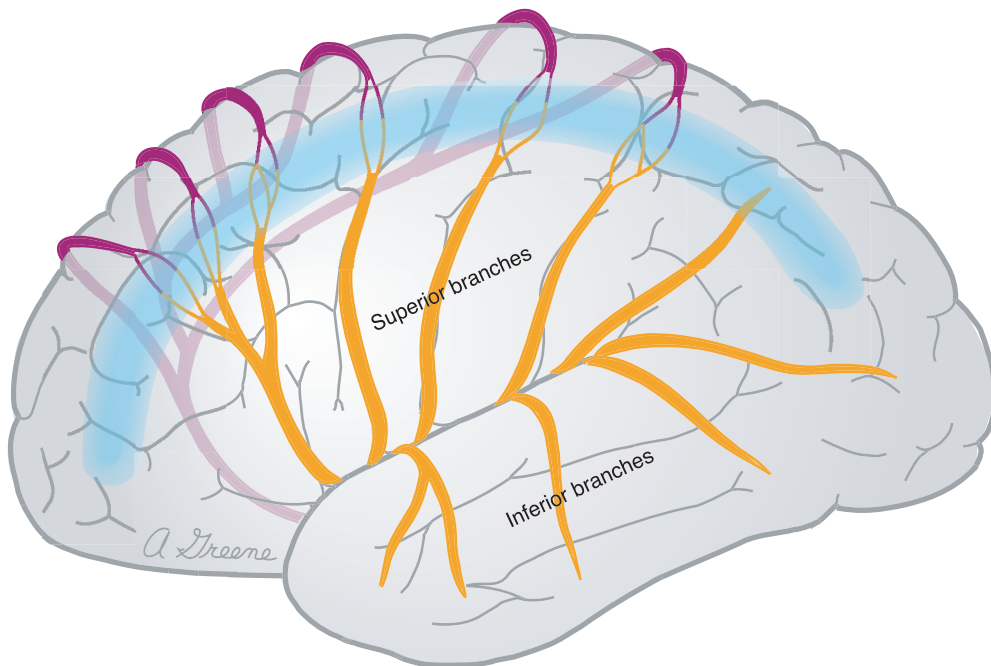


7. ACA-MCA



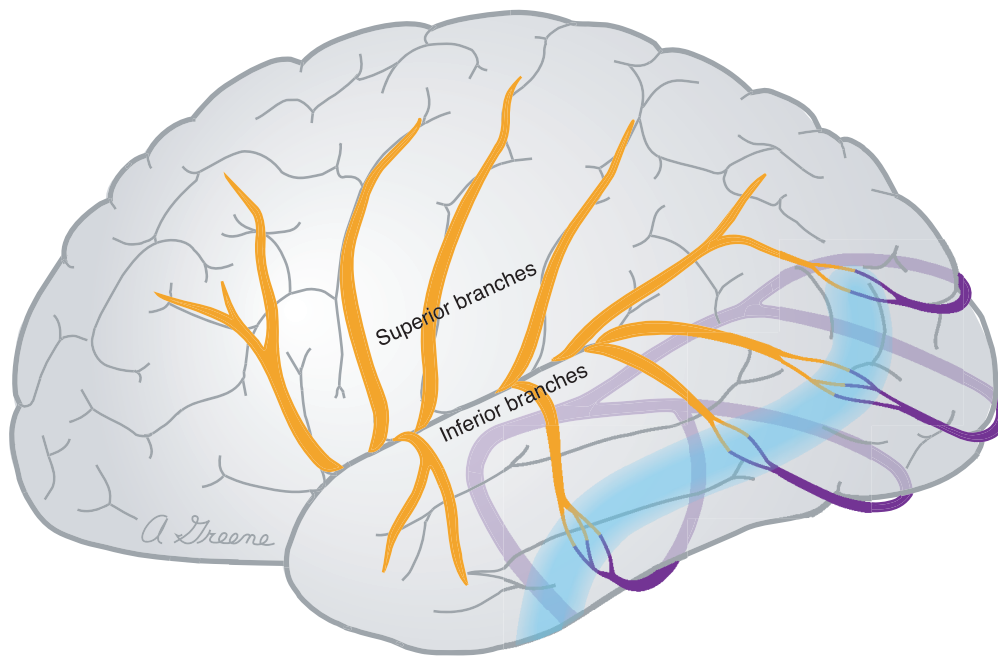
ANTERIOR




| KEY | |
|---|----------------------------|
|  | Anterior cerebral a. (ACA) |
|  | Middle cerebral a. (MCA) |
|  | Border zone |



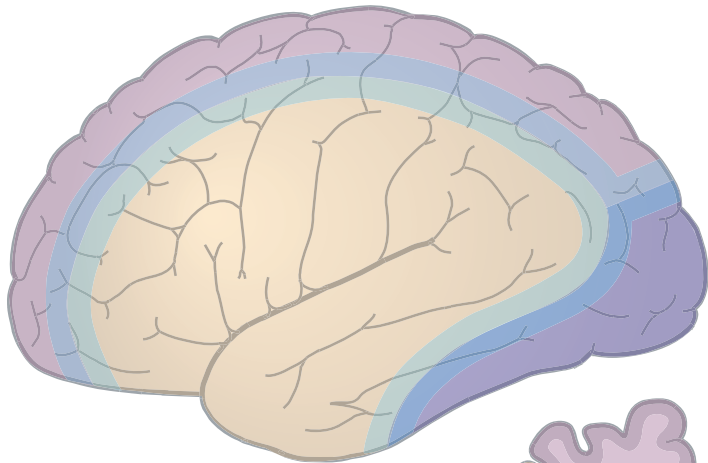
LATERAL

8. MCA-PCA LATERAL

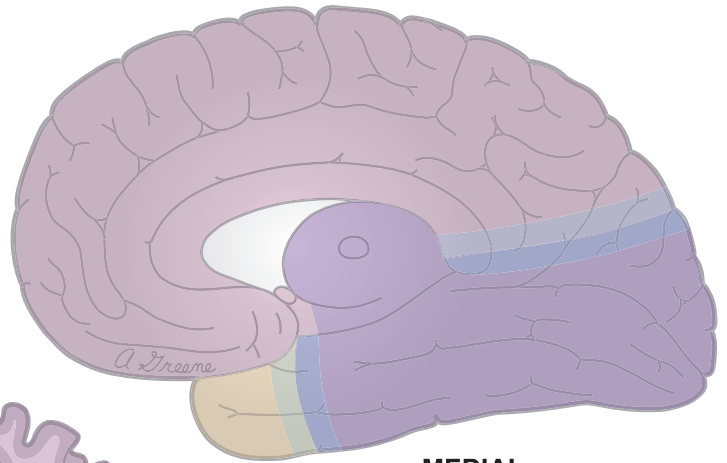


| KEY | |
|---|-----------------------------|
|  | Middle cerebral a. (MCA) |
|  | Posterior cerebral a. (PCA) |
|  | Border zone |

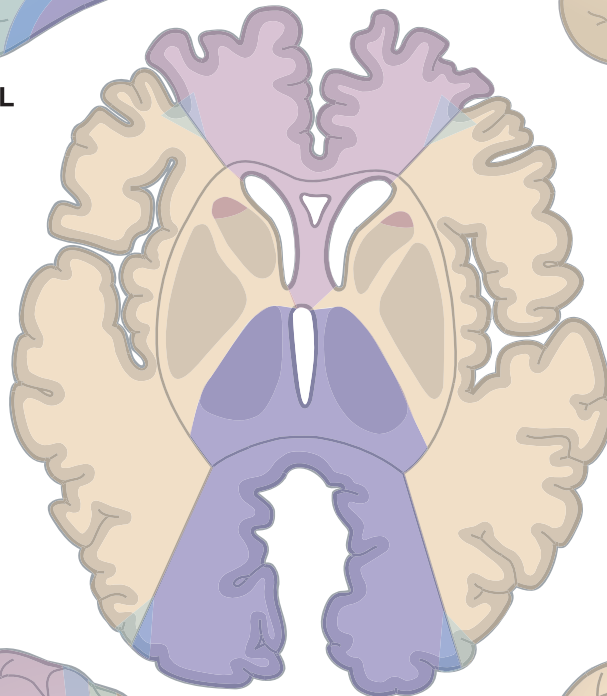
9. FOREBRAIN TERRITORY MAPS







LATERAL

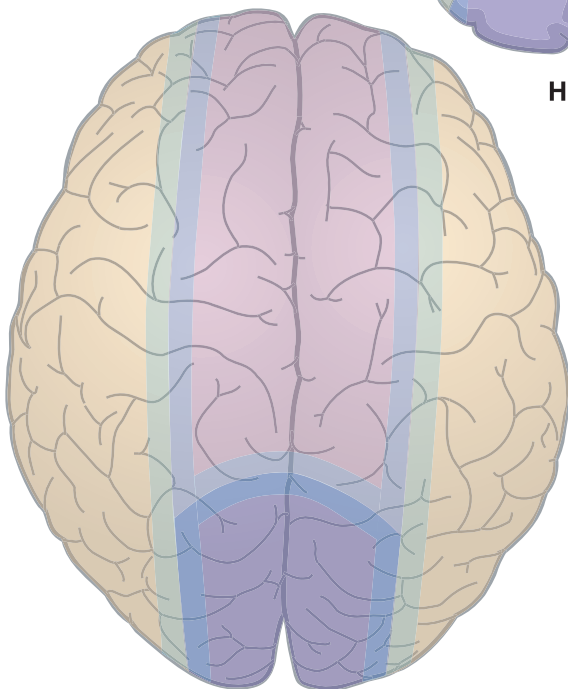


MEDIAL

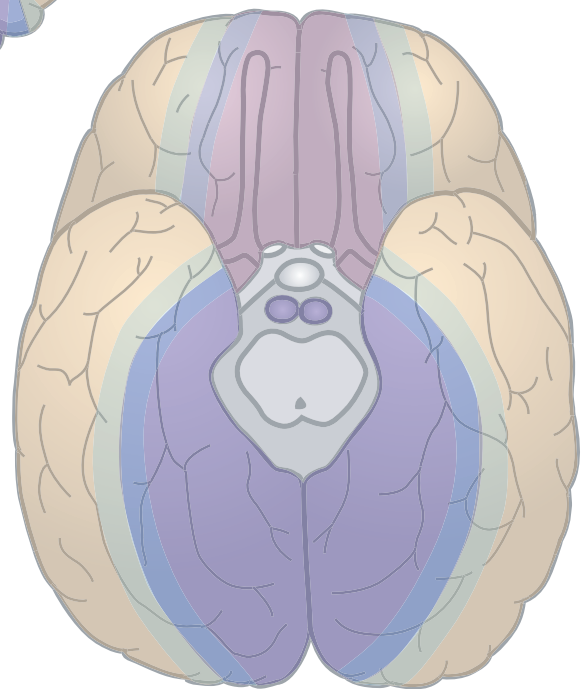


HORIZONTAL

| KEY | |
|---|-----------------------------|
|  | Anterior cerebral a. (ACA) |
|  | Middle cerebral a. (MCA) |
|  | Posterior cerebral a. (PCA) |
|  | Border zone |



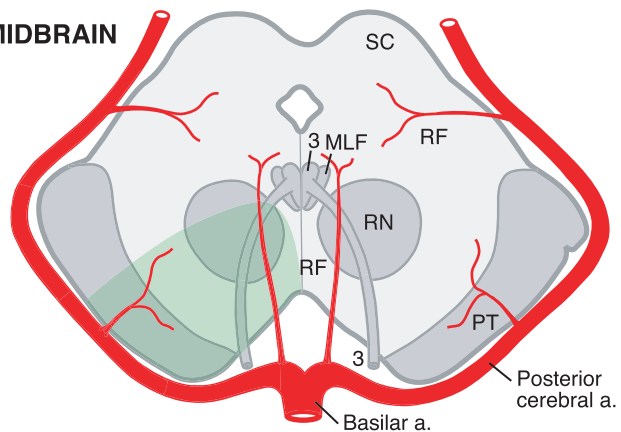
SUPERIOR



INFERIOR

10. BRAINSTEM SYNDROMES

MIDBRAIN



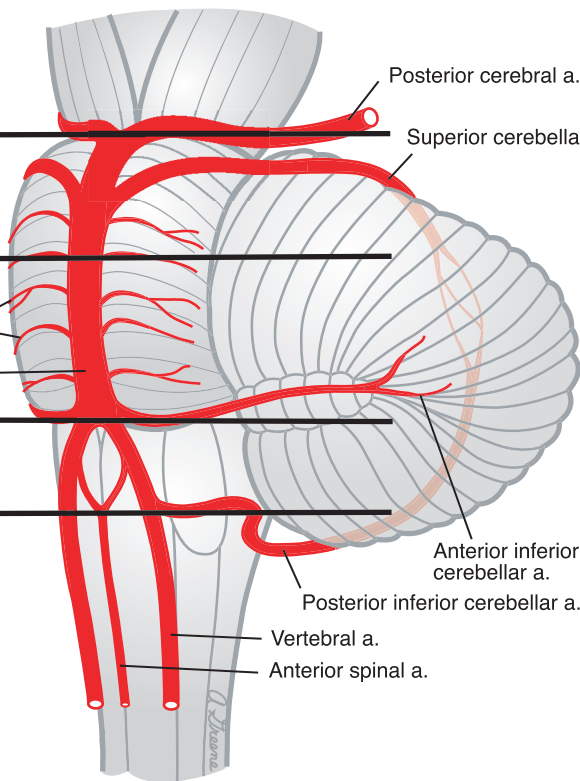
MIDBRAIN

MID-PONS

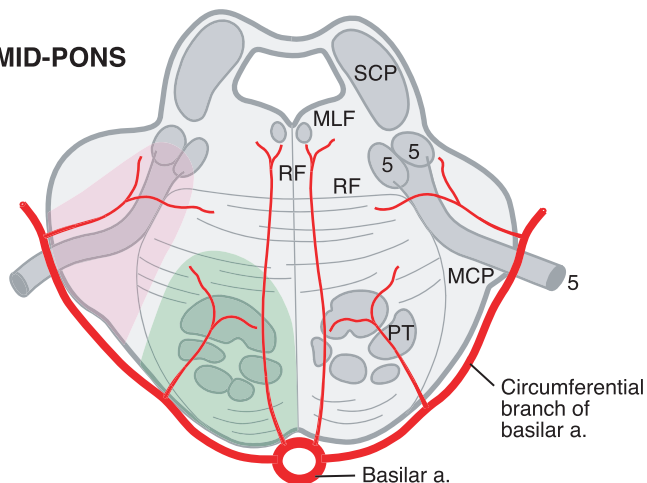
Short circumferential branches of basilar a.

CAUDAL PONS

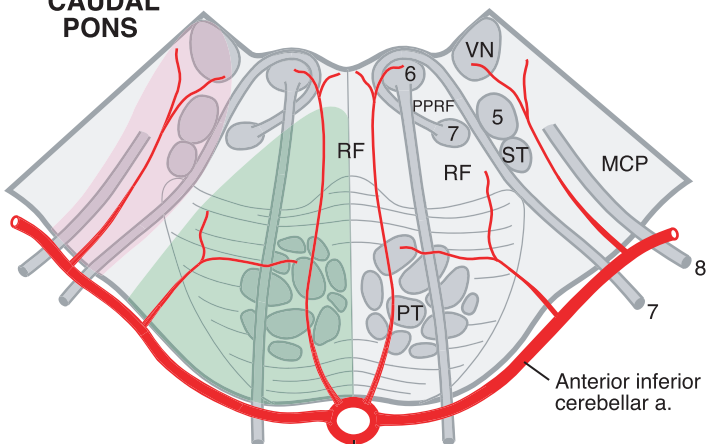
ROSTRAL MEDULLA



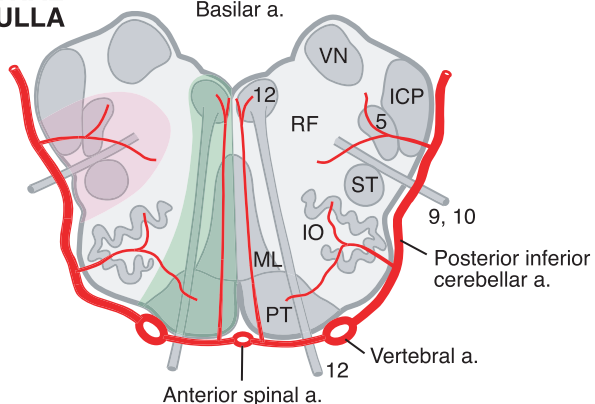
MID-PONS



CAUDAL PONS



ROSTRAL MEDULLA



KEY

- IO Inferior olivary complex
- ML Medial lemniscus
- MLF Medial longitudinal fasciculus
- PPRF Paramedian pontine reticular formation
- PT Pyramidal tract
- RF Reticular formation
- RN Red nucleus
- SC Superior colliculus
- ST Spinothalamic tract
- VN Vestibular nuclei

- ICP Inferior cerebellar peduncle
- MCP Middle cerebellar peduncle
- SCP Superior cerebellar peduncle

3-12 refer to cranial nerves or their nuclei

- Medial syndrome
- Lateral syndrome