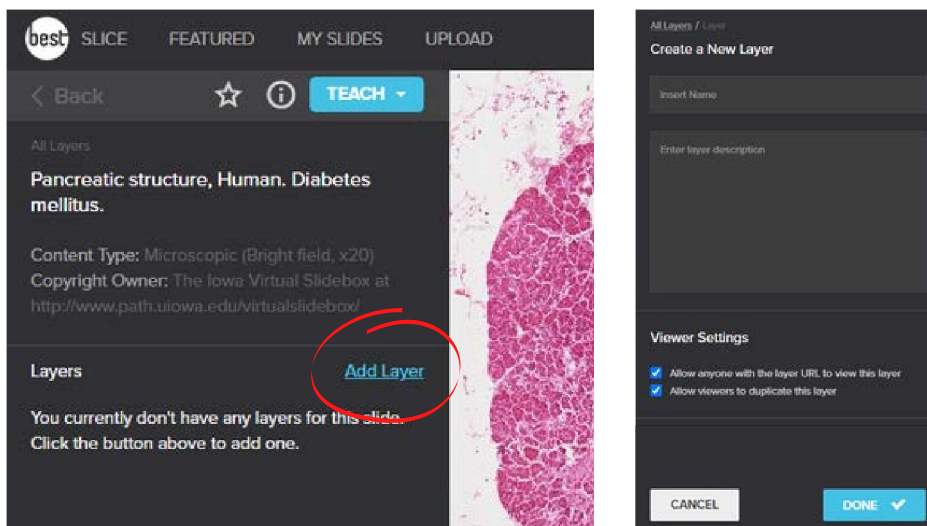


BEST Network

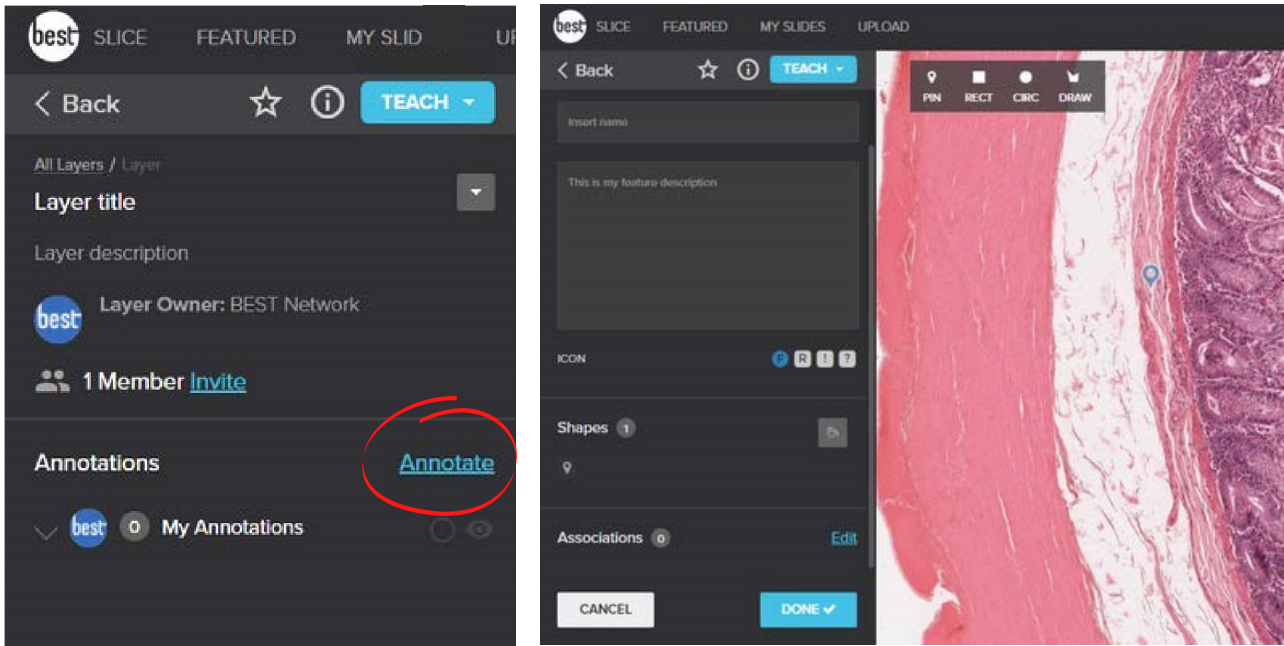
Annotating Slide Images

Annotations are highlighted areas of an image with/without descriptions. As a registered user, you are able to make annotations at any time. Only you will see them, unless you choose to share them with others.

1. To create a layer, click Add Layer and give your layer a title and optional description. When finished, click DONE to save your layer.



2. To start marking features on your layer, click Annotate
3. Select either the PIN, one of the shapes (RECT or CIRC), or the DRAW tool



4. Annotate the image by either:

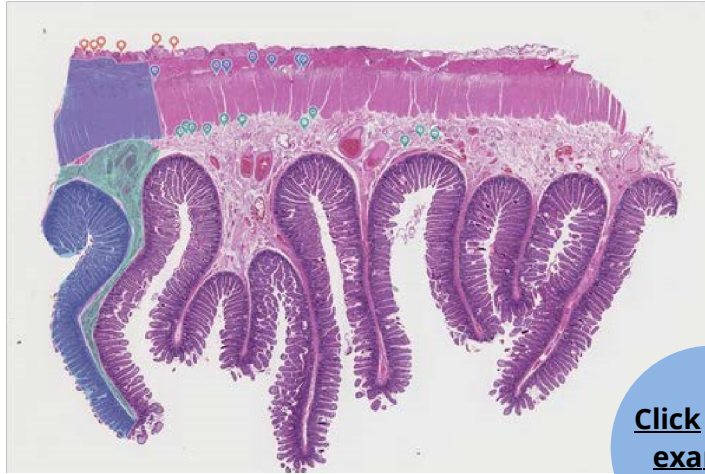
- clicking on the image to place a pin
- clicking and dragging to size a shape, or
- clicking as you outline the edges of a feature using the draw tool (double click to finish drawing).
- Pins, shapes, or drawings can be moved by clicking and dragging. Shapes and drawings can be modified by clicking and dragging the small white circles at the edges.

5. Repeat the process if you would like to define multiple pins, shapes, drawings (or a combination) that relate to the same feature you are highlighting.

6. In the left panel, give the annotation a name and description.

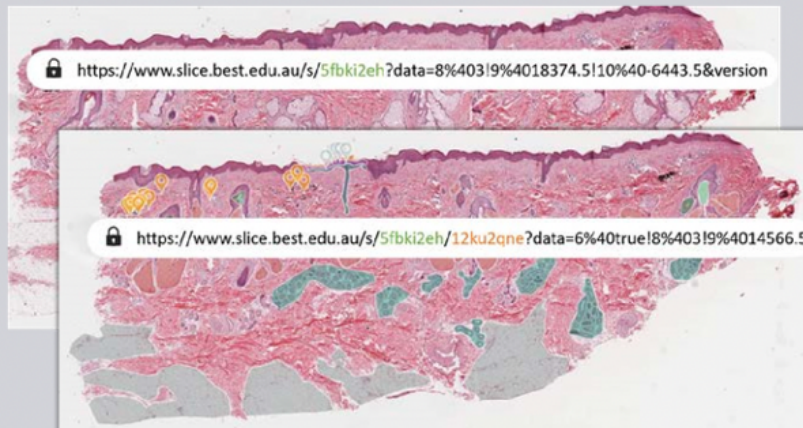
7. Change the color of the region or feature by clicking the color bucket under shapes. 8. Click DONE.

Click Back or the layer title to mark more features by making a new Annotation.



[Click for an example layer](#)

Sharing images and annotation layers



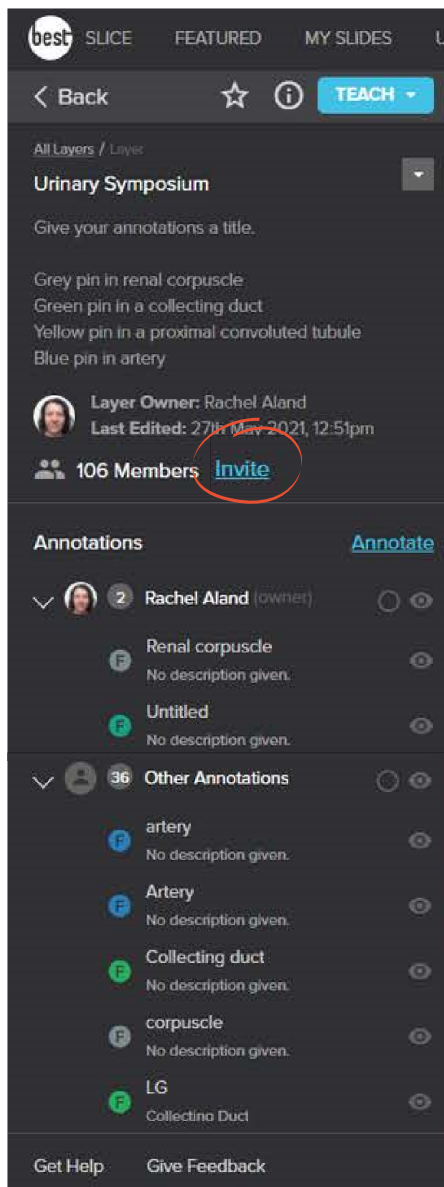
Sharing images and annotation layers is done by sharing the URL.

Each image has a unique ID (green text). Sharing a link while viewing the image (and not any annotation layers) provides access to the image only.

Annotation layers are also assigned unique IDs (orange text). Sharing a link when viewing a layer provides others with viewing access to that layer when they are logged in.

URLs also capture the specific zoom level and screen position. When you share the URL you can be sure your colleagues and students will load the exact same view - same place, same magnification.

Collaboration on annotations



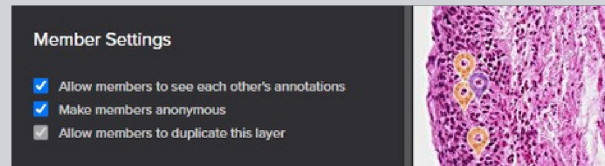
Making annotations can be a group activity.

Collaborative annotation facilitates both small group annotation layers where members work collaboratively, or large group activities where less confident participants can attempt an exercise. They also give you insight into participants understanding.

First, give instructions in the layer description.

Then, click the INVITE button to generate a link specific to the annotation layer that can be shared via Blackboard etc.

Change the way members interact



Under the "Edit Layer" Menu, Member settings can be adjusted before, during or after the activity.

- Give students time to complete an activity on their own with no influence from others by unchecking "Allow members to see each other's annotations".
- Alternatively, allow all students to see each other's annotations from the start of the activity to make it truly collaborative.
- Decide whether student's annotations are anonymous or credited to their name.

Click to learn more

Your annotations on a collaborative layer

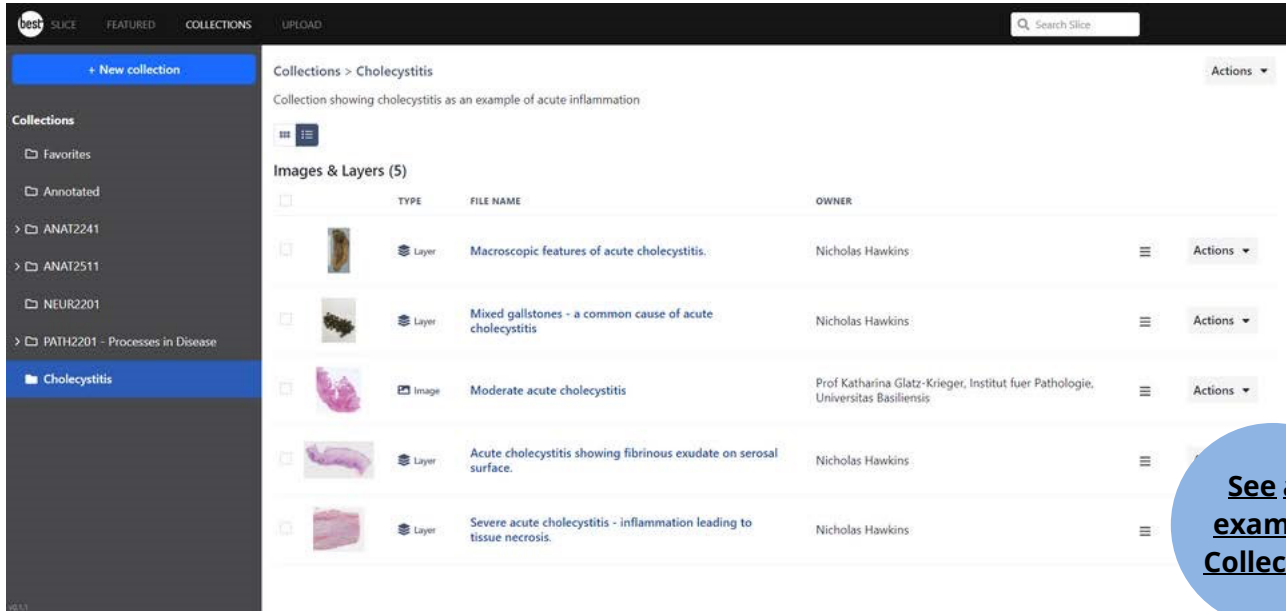
Any annotations you make on a collaborative layer will be seen by the students when they view the layer. If you wish to highlight correct regions, consider doing this on a second layer or waiting until the end of an activity.

Using collections

Collections are folders of images and layers that members can curate to organize items for personal reference or for use as part of a course. Subcollections can be created within

Collections for further organization. For example, one main Collection can be created for a Course and then subcollections are created to organize the images viewed for each week in the course.


Collections makes it easy to share groups of images or layers with others. However, all Collections are private until the link to your Collection is shared with others.



[See an example Collection](#)

To create a Collection, click the **Collections** tab in the top navigation bar on Slice.

Click the blue **+ New Collection** button at the top of the left panel to create a Collection.

To add an image or layer on Slice to a Collection, while viewing the image, click the Collection icon () to open the menu to select the Collection(s) that the image or layer will be added to.

[Click to learn more](#)